



Bronto Skylift F28ALR

VERSATILE 3 IN 1 FIRST RESPONSE UNIT





3 in 1
Fire truck
+
Aerial platform
+
Rescue ladder

Ready for any rescue mission

Every emergency situation is unique. When a rescue mission has been launched, and you don't fully know what you are up against, the F28ALR is the answer.

For over 40 years we have developed reliable aerial ladder platforms for firefighters. The new first response unit now includes everything you need: a fire truck, an aerial platform and a rescue ladder.

F28ALR key features

- Fire truck for a large crew
- Working height 28 metres
- Working outreach 20 metres
- Water spraying capacity 3,500 litres per minute
- Spacious rescue cage with 350 kg capacity
- Rescue ladder with fixed handrails





Be faster...

When minutes count, the Bronto Skylift F28ALR first response unit takes you to the emergency site quickly.

Quick to deploy, easy to set-up

Shortest transportation length in 28 metre class makes the unit compact and quick to manoeuvre in ordinary traffic and city streets.

The unit has variable jacking, which makes it ideal for working in confined spaces and narrow streets.

Due to the latest technology, the unit is up and functional within minutes.

Efficient and accessible








The heart of the platform is its water system that discharges water at an outstanding 3,500 litres per minute.

The F28ALR can be used as a regular fire truck. The water system can be situated in the back of the platform, enabling easy access even in the transport position.

As the water system is situated in the back, it does not take up space in the equipment lockers.

The primary water and foam tanks can be adjusted to local requirements, for example 2,000 litres of water and 200 litres of foam.

Any commercial pump of your choice can be fitted on the platform.

	28 m		< 3.9 m*
	22 m		< 10 m*
	350 kg		17 t*
	3,500 l/min		



... and safer

Our priority is that firefighters can focus on their work in tough environments and always return home safely.

Safely up and down in a rescue cage

The spacious and well-equipped rescue cage with 350 kg capacity can be equipped with integrated outlets for water, breathing air, hydraulics and electricity.

We can also supply accessories such as a stretcher, to provide additional assistance in the cases of elderly, disabled or injured persons.

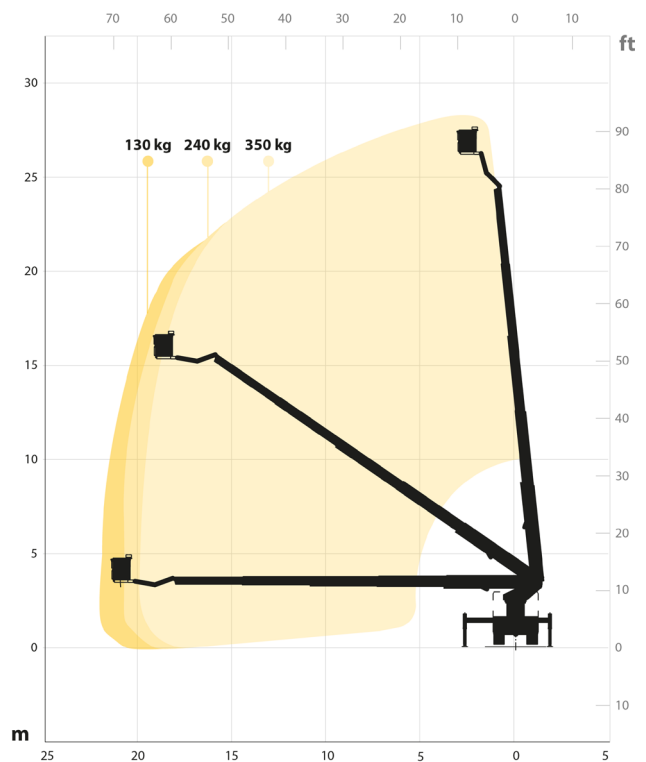
The cage comes with heavy duty EN795 compliant safety harness attachment points as standard.

Control system for added safety

Safety is not just about fulfilling the standards, it's also about creating a safer working environment. An advanced control system increases the safety of your mission by letting you focus on reaching the job at hand and working at heights.

The unit includes a 5th generation Bronto+ control system that provides precise, smooth and stable movements even in the most severe operating conditions.

The advanced control system can be used with a resistive touch screen or regular push buttons, so it's always operable with even the thickest of gloves.





Various options

- Breathing air, electricity and hydraulics in the cage
- Remote control for boom movements and water monitor
- Emergency back-up system
- Detachable winches
- Stretcher carrier
- High voltage detector
- Ultrasonic collision guard
- Various working lights and camera options
- Laser Rangefinder
- Bronto Loadman to measure ground bearing

(simplified selection)



Services for added safety and efficiency

For optimal performance and your safety, it pays off to take the best possible care of your Bronto platform.

The widest service network in the industry keeps you backed up wherever you are. With a Bronto Service agreement, you can be assured that your Bronto equipment is kept in the best possible shape for its entire lifetime. The content of the mutual agreement can be fully customised according to your needs. It can cover the annual inspections and service visits, but it can also include more detailed inspections, other maintenance activities and spare parts.

When the emergency arises, confidence in operator skills is crucial. For your teams safety our IPAF-certified field engineers provide operator and maintenance training for all new units. Content, location and the depth of the training can be tailored and additional training is always available where ever you need it.

Advanced IoT for steady performance

As all modern equipment, most Bronto's are online too. With Bronto Compass our service personnel can open a real time remote connection to the platform, which enables various settings and calibration of the platform. Most importantly, it enables finding, analysing and correcting faults rapidly on the go. With Bronto Compass your team always has an access to the in-depth product support that our professionals can offer.

Skyliftfleet is a tool for you to take the best care of your high-reaching team member. The web-based portal stores all important manuals and information and serves as a handy dashboard providing a comprehensive overview on how your platform is doing. You can find for example service bulletins, service cycles and extensive usage information within Skyliftfleet.

Bronto+ control system takes care of you

Safety is about creating a safer working environment. An advanced Bronto+ control system increases the safety on your worksites by letting you focus on the job at hand.

- Easy and ergonomic
- Precise, stable movements and extremely reliable outreach
- Automatic selection of the maximum allowed outreach in every direction based on the set up and cage load
- Bronto+ displays with touch screens and tailorable menus
- Integrated help texts, quick manuals and detailed failure codes help you in all situations



Safety above all



Bronto Skylift is a trusted global supplier of truck-mounted hydraulic platforms. We design, manufacture, sell and service appliances for rescue and firefighting, as well as for industrial access.

Our product range includes approximately 50 models with a range of 17 to 112 metres of working height. The advanced modularity also allows for numerous client-specific modifications. During the past 50 years, we have delivered over 7,000 platform units to fire brigades and industrial customers throughout all the continents in more than 120 countries.

Our headquarters and production plants are situated in Finland. We also have subsidiaries in Germany, Sweden, Switzerland and the US. The company is part of the Japan-based Morita Holdings Corporation.

sales@brontoskylift.com

Technical data and illustrations subject to change without notice.

www.brontoskylift.com